

Helena Regional Airport Authority



Airport Authority Commissioners

- ▣ Rick Hays – Chair
- ▣ Jon Moe – Vice Chair
- ▣ John Grant – Secretary
- ▣ Jane Fournier – Immediate Past Chair
- ▣ Dave Simkins – Commissioner
- ▣ Liz Bangerter – Commissioner
- ▣ Mike Murray – Commissioner
- ▣ Greg Gould – Airport Attorney

Airport Staff

- ▣ Administration
- ▣ Maintenance
- ▣ Operations
- ▣ Custodial
- ▣ Emergency Services Coordinator
- ▣ On-Call, Seasonal Staff

Perfect 2017 FAA Certification Inspection

Economic Impact

- ▣ 2016 Statewide Airport Economic Impact Study
 - Helena Airport specifically supports:
 - ▣ 2,000 jobs
 - ▣ \$79,543,000 in payroll
 - ▣ \$284,656,000 in economic impact

Smokejumper Restaurant and Bar Now Open!



Automated Long Term Parking



REAL ID

- ▣ Montana received extension until October of 2018

Aircraft Operations

- ▣ Tower Operations +19.4% YTD Over 2016
- ▣ 3rd Busiest Tower in Montana
- ▣ Privatization Discussion of National Air Traffic System

Helena Air Service Update

- ▣ 2017 YTD Average Load Factors
 - DELTA (SLC) 83%
 - DELTA (MSP) 84%
 - UNITED (DEN) 88%
 - ALASKA (SEA) 74%

Air Service Challenges - Recruitment

- ▣ Competition
- ▣ Incentives & Revenue Guarantees -
Airport CANNOT fund these legally
- must be community effort.

Update On Helena's Current Air Service Expansion Efforts

- ▣ Additional Service To Seattle
- ▣ New Service to Portland
- ▣ US DOT Small Community Air Service Development Grants
- ▣ Incentive Package
 - Local \$125,000
 - US DOT Grant \$500,000
 - **TOTAL** \$625,000

Regional Airline Pilot Shortage

- ▣ Contributing Factors
- ▣ Horizon (Alaska) Airlines Very Affected
- ▣ Challenges and Options

TERMINAL EXPANSION 2018-2019



Design/Construction Team GCCM Project

- ▣ Morrison Maierle Engineers
- ▣ CWG Architects
- ▣ Price Simpson Harvey
- ▣ Dick Anderson Construction
- ▣ Helena Airport Commissioners, Staff, and Airport Tenants

Why It is Needed

- ▣ Airport Master Plan Updated in 2016
- ▣ 22% growth since last expansion
- ▣ Currently at capacity during peak times
- ▣ More Seating
- ▣ Additional Restroom Facilities
- ▣ Ongoing Maintenance
- ▣ Energy Efficiency
- ▣ Aircraft Fleet Changes – Larger Aircraft

Delta Aircraft Changes

50 Seat Jets Transition to 76+ Seat Jets



United Aircraft Fleet Changes

41% Increase
In Seats
Annually



Alaska Airlines Upcoming Fleet Changes



Current Aircraft -

- Q400 Turbo Prop
- 76 Seat Single Class
- 414 MPH Cruise Speed
- Ground Boarding



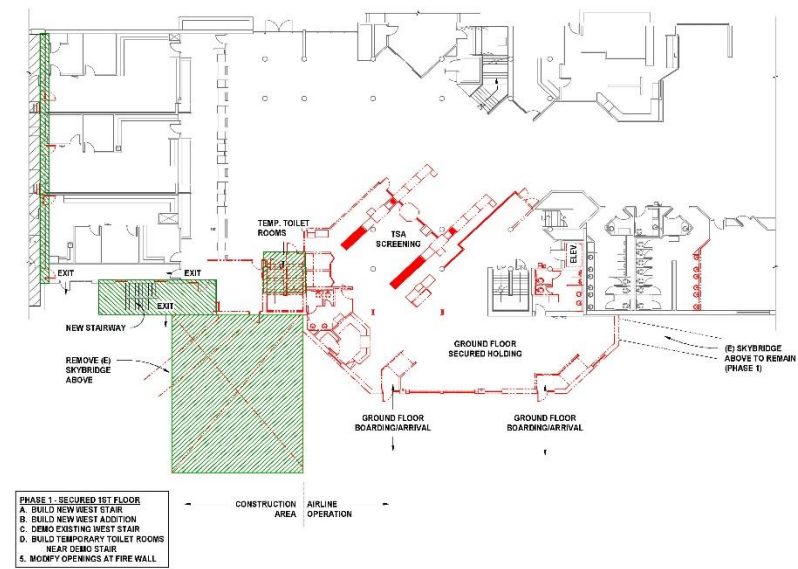
Future Aircraft

- Embraer 175 Jet
- 76 Seat Dual Class
- 545 MPH Cruise Speed
- Jet Bridge Boarding

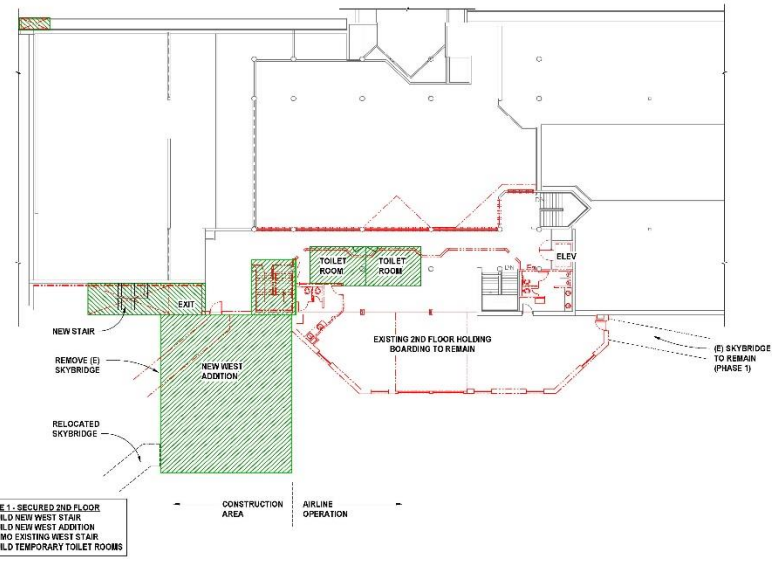
Accommodation For Future Growth Opportunities



Construction - Phase 1



① FIRST FLOOR - PHASE 1
SCALE: 1/8" = 1'-0"



② SECOND FLOOR - PHASE 1
SCALE: 1/8" = 1'-0"

1. MAINTAIN EXISTING AIRLINE OPERATION - USING EAST SKYBRIDGE
2. BUILD WEST SECTION OF ADDITION 2 FLOORS

PROGRESS
PRINT NOT FOR
CONSTRUCTION



**Morrison
Majerle**
ARCHITECTS
1000 W. BROADWAY
SUITE 200
DENVER, CO 80202
TEL: 303.733.1100
WWW.MMJA.COM

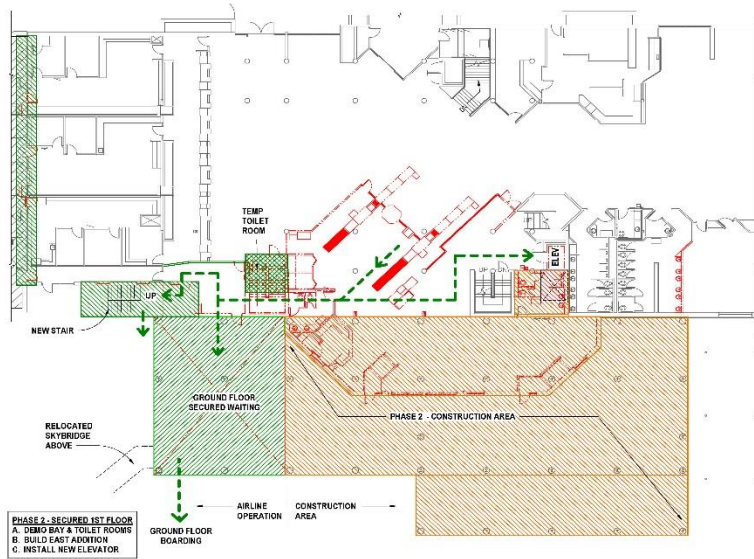
**Price
Simpson
Harvey**
ARCHITECTS
2075 FOURTH STREET
DENVER, CO 80202
TEL: 303.733.1100
WWW.PSH.COM

HELENA REGIONAL AIRPORT
PASSENGER TERMINAL EXPANSION
2650 MERCER LOOP, HELENA, MT, 59602
PHASING PLAN - PHASE 1

21-06-13
DRAWN BY: J.C.
DATE: 06/13
REV: 1 PRELIMINARY

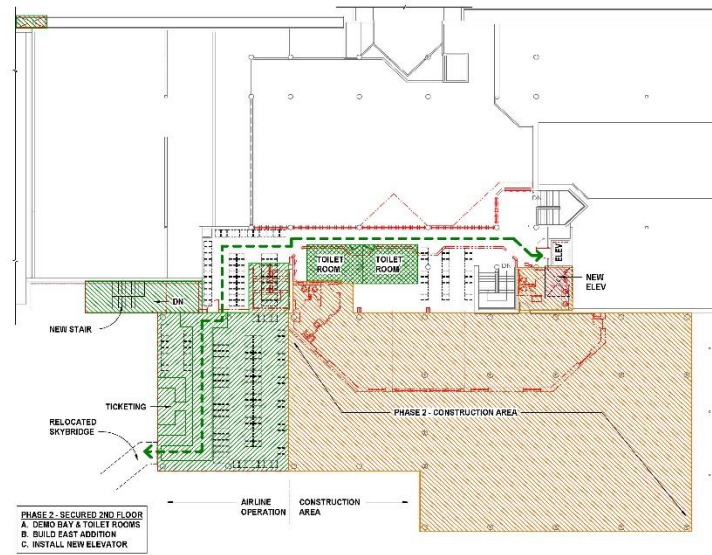
PH-1

Construction - Phase 2



① **FIRST FLOOR - PHASE 2**

SCALE: 1/8" = 1'-0"



② **SECOND FLOOR - PHASE 2**

SCALE: 1/8" = 1'-0"



1. AIRLINE OPERATION - USING WEST ADDITION
2. BUILD EAST SECTION OF ADDITION 2 FLOORS

PROGRESS
PRINT NOT FOR
CONSTRUCTION

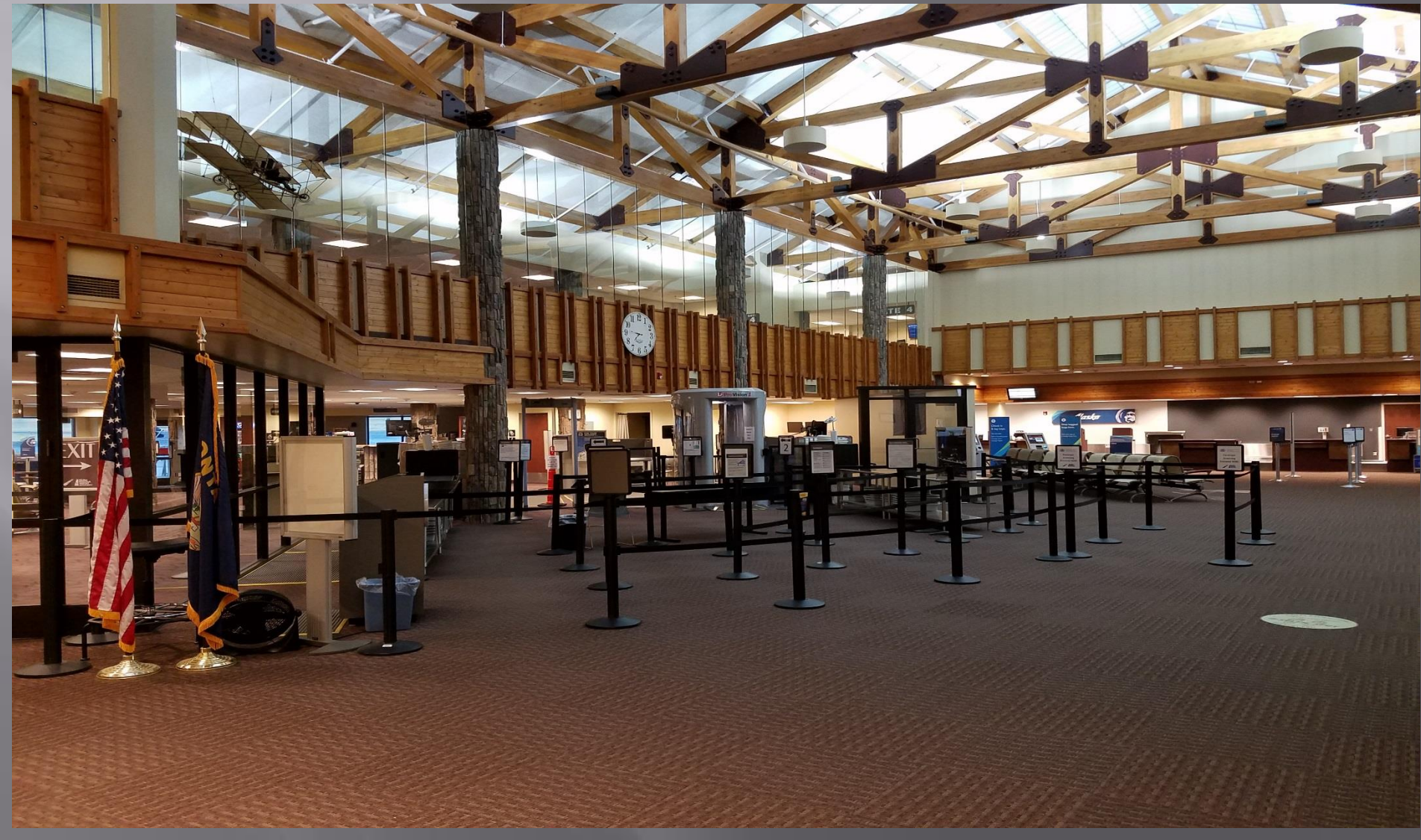


HELENA REGIONAL AIRPORT
PASSENGER TERMINAL EXPANSION
2850 MERCER LOOP, HELENA, MT, 59602
PHASING PLAN - PHASE 2

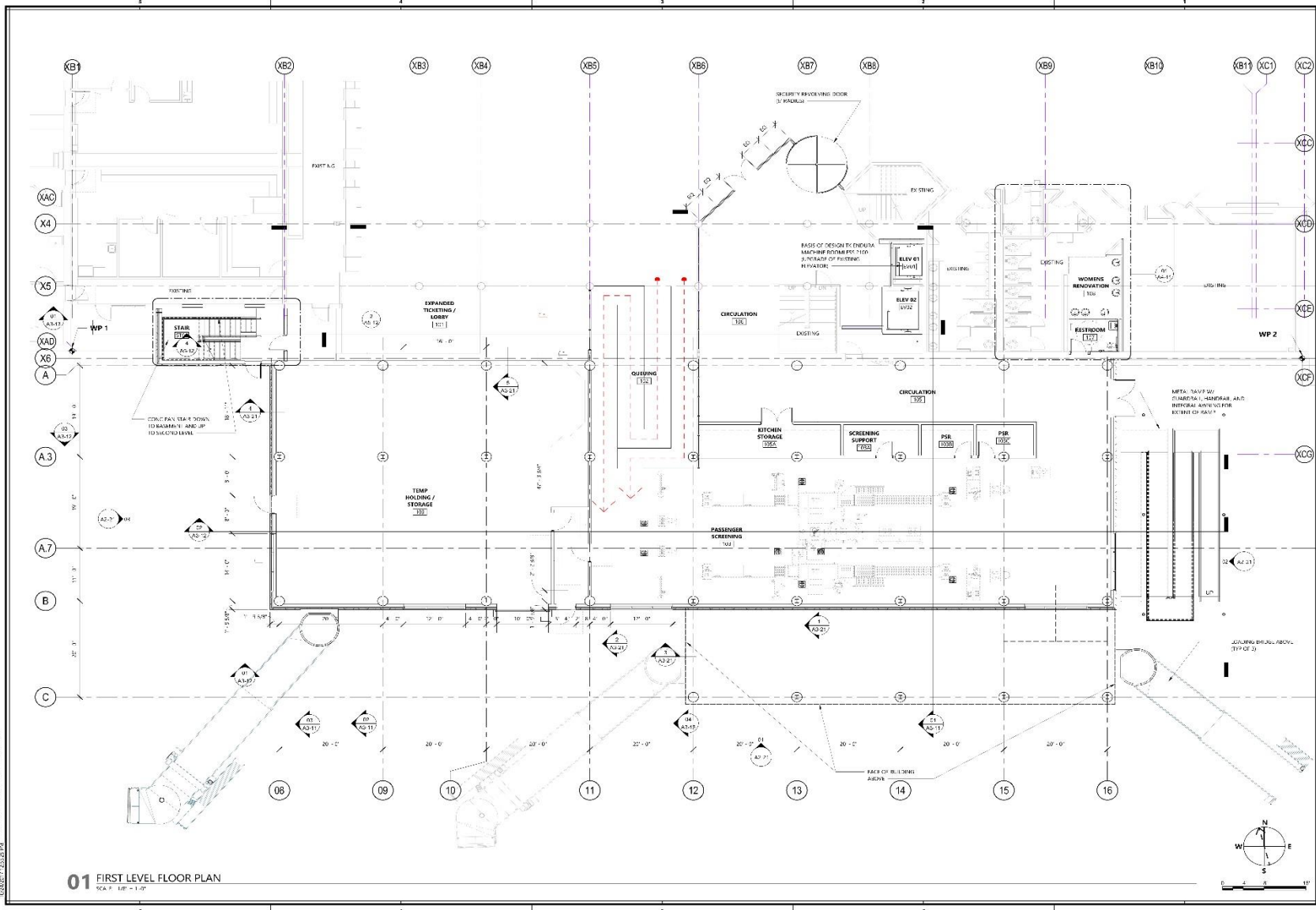
21-06-13
DRAWN BY: J.C.
DATE: 06/13/21
REV. 1 PRELIM 1/13/21

PH-2

Relocation of Passenger Screening and Queuing Area



Level 1 Floorplan



01 FIRST LEVEL FLOOR PLAN
 ICA 2, 1/8" = 1'-0"



307 North Foothill Street
 Bozeman, Montana 59722
 Phone: (406) 551-7100
 www.pricedesign.com



TERMINAL EXPANSION
 Helena, Montana

75% DESIGN DEVELOPMENT

NOT FOR CONSTRUCTION

CONTRACT: HELENA AIRPORT TERMINAL EXPANSION
 SHEET: 01-01-01

REVISION SCHEDULE

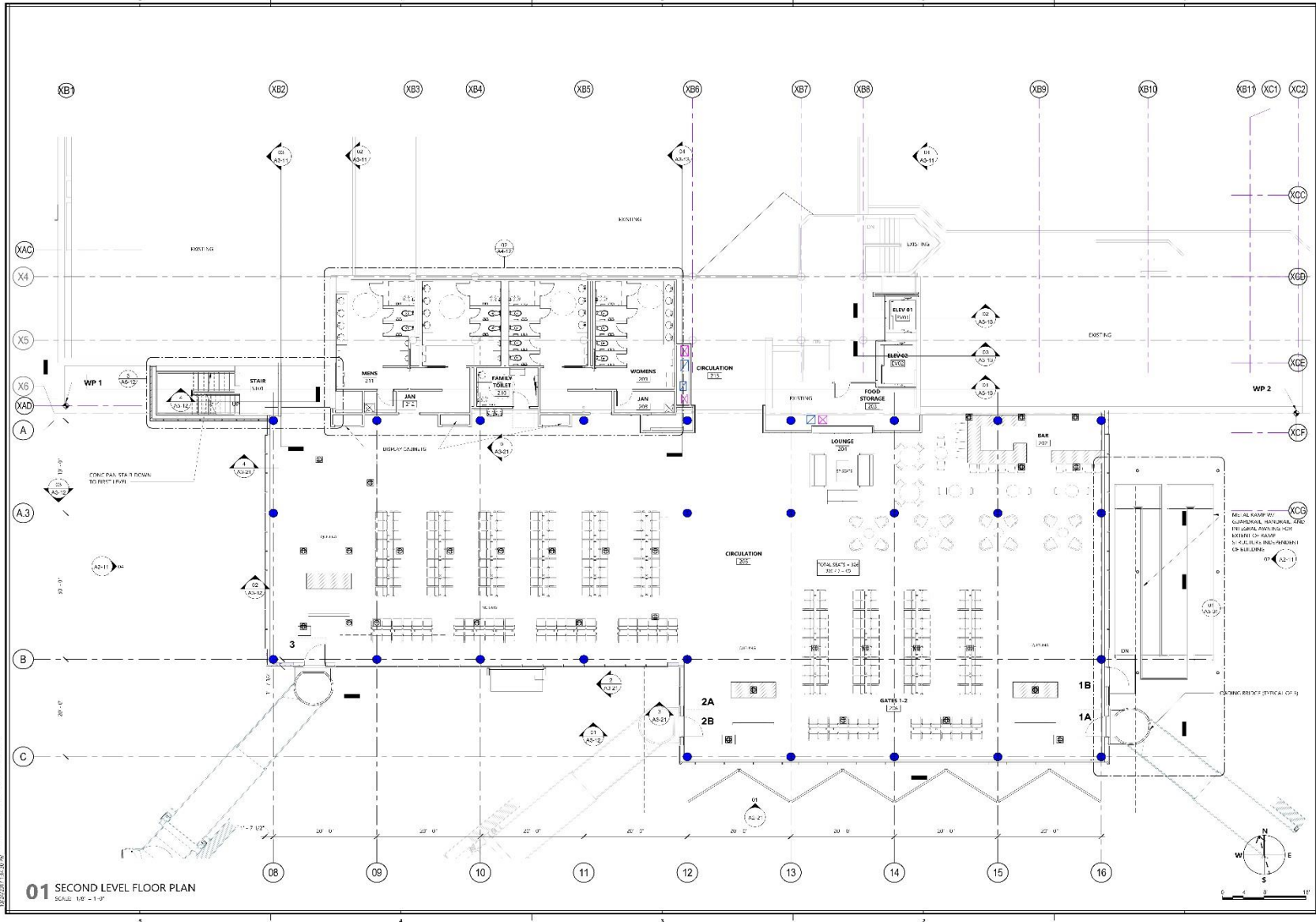
No.	Description	Date

PRICE NO. 2016-04
 SCALE: 1/8" = 1'-0"
 DATE: Oct. 2, 2017

FIRST LEVEL FLOOR PLAN

A1-11

Level 2 Floor Plan



01 SECOND LEVEL FLOOR PLAN
SCALE: 1/8" = 1'-0"

Price Simpson Harvey
207 Main Street
Helena, Montana 59601
Phone: (406) 832-2800
www.price-simpson-harvey.com

Morrison Maierle
architects | interior design | landscape architecture

awg ARCHITECTS

DICK ANDERSON
CONSTRUCTION MANAGEMENT

TERMINAL EXPANSION
Helena, Montana

75% DESIGN DEVELOPMENT

NOT FOR CONSTRUCTION

REVISION SCHEDULE		
No.	Description	Date

PRICE NO. 2016-06
SCALE: 1/8" = 1'-0"
DATE: Oct. 2, 2017

SHEET:
SECOND LEVEL FLOOR PLAN

A1-12



207 N. FOLSHEE STREET
RICHMOND, VA 23222
(804) 525-2900
www.psharvey.com



1 ENGINEERING PLACE
HELENA, MT 59602
(406) 442-3350
www.mmaierle.com



650 POWER STREET
P.O. BOX 1186
HELENA, MT 59624
(406) 442-2340
cwg@cwg-architects.com



**HELENA REGIONAL AIRPORT
PASSENGER TERMINAL EXPANSION**
2850 MERCER LOOP, HELENA, MT. 59602





207 N. FOLSHEE STREET
RICHMOND, VA 23222
(804) 525-2900
www.psharvey.com



1 ENGINEERING PLACE
HELENA, MT 59602
(406) 442-3350
www.mmaierle.com



650 POWELL STREET
P.O. BOX 1186
HELENA, MT 59624
(406) 442-2340
cwg@cwg-architects.com



DICK ANDERSON
CONSULTANTS
www.dickanderson.com

HELENA REGIONAL AIRPORT
PASSENGER TERMINAL EXPANSION
2850 MERCER LOOP, HELENA, MT. 59602





207 N. FOLSHEE STREET
RICHMOND, VA 23222
(804) 523-2900
www.psharvey.com



1 ENGINEERING PLACE
HELENA, MT 59602
(406) 442-3350
www.mmaierle.com



650 POWER STREET
P.O. BOX 1186
HELENA, MT 59624
(406) 442-2340
cwg@cwg-architects.com



**HELENA REGIONAL AIRPORT
PASSENGER TERMINAL EXPANSION**
2850 MERCER LOOP, HELENA, MT. 59602





207 N. FOLSHEE STREET
 RICHMOND, VA 23222
 (804) 523-2900
 www.psharvey.com



1 ENGINEERING PLACE
 HELENA, MT 59602
 (406) 442-3350
 www.mmaierle.com



650 POWER STREET
 P.O. BOX 1186
 HELENA, MT 59624
 (406) 442-2343
 cwg@cwg-architects.com



DICK ANDERSON
 CONSULTANTS
 www.dickanderson.com

HELENA REGIONAL AIRPORT
 PASSENGER TERMINAL EXPANSION
 2850 MERCER LOOP, HELENA, MT. 59602





207 N. FOLSHEE STREET
RICHMOND, VA 23222
(804) 523-2900
www.psharvey.com



1 ENGINEERING PLACE
HELENA, MT 59602
(406) 442-3350
www.mmaierle.com

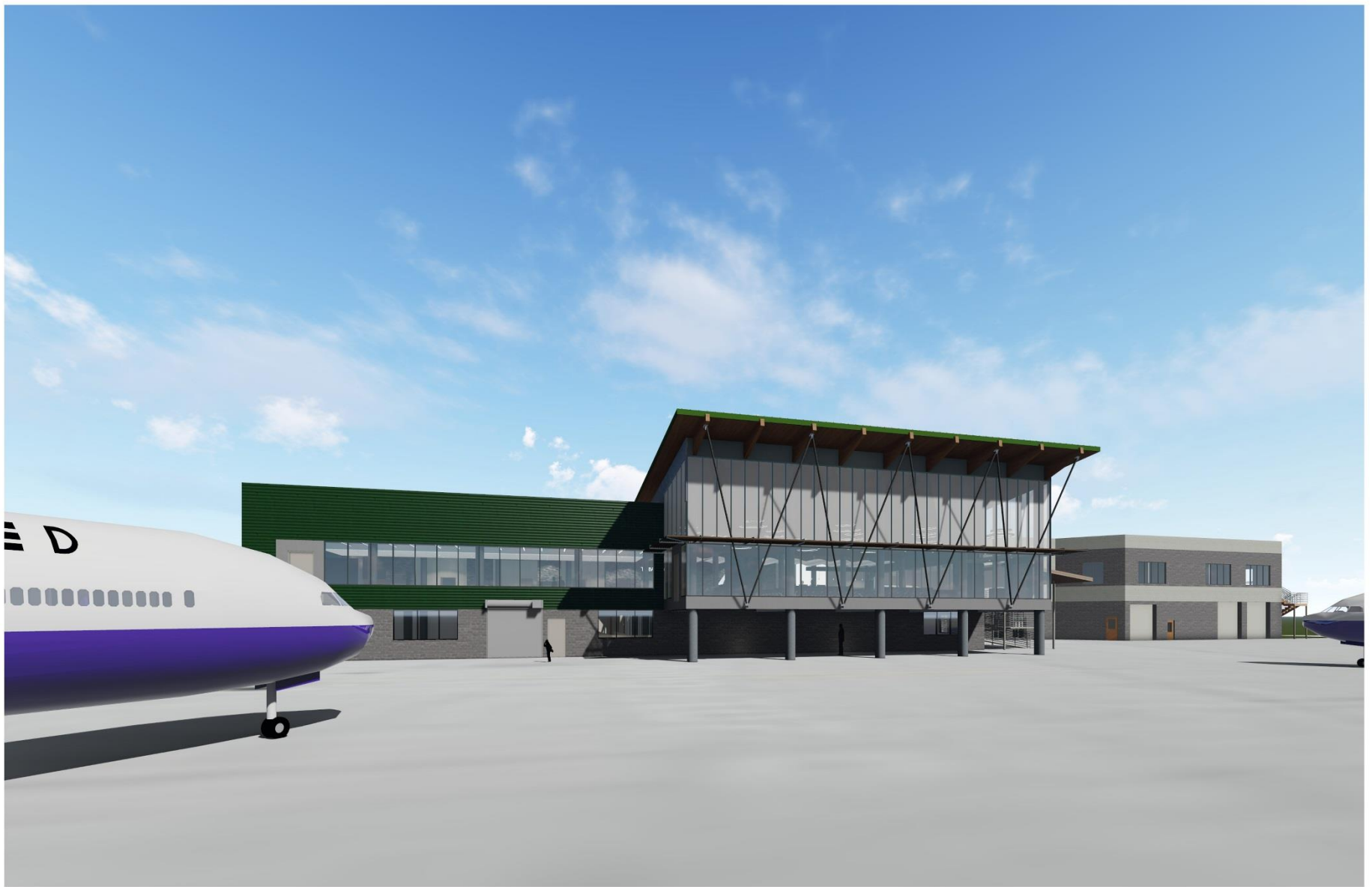


650 POWER STREET
P.O. BOX 1188
HELENA, MT 59624
(406) 443-2340
cwg@cwg-architects.com



**HELENA REGIONAL AIRPORT
PASSENGER TERMINAL EXPANSION**
2850 MERCER LOOP, HELENA, MT. 59602





207 N. FOLSHEE STREET
RICHMOND, VA 23222
(804) 525-2900
www.pricingsimpsonharvey.com



1 ENGINEERING PLACE
HELENA, MT 59602
(406) 442-3350
www.mmae.net



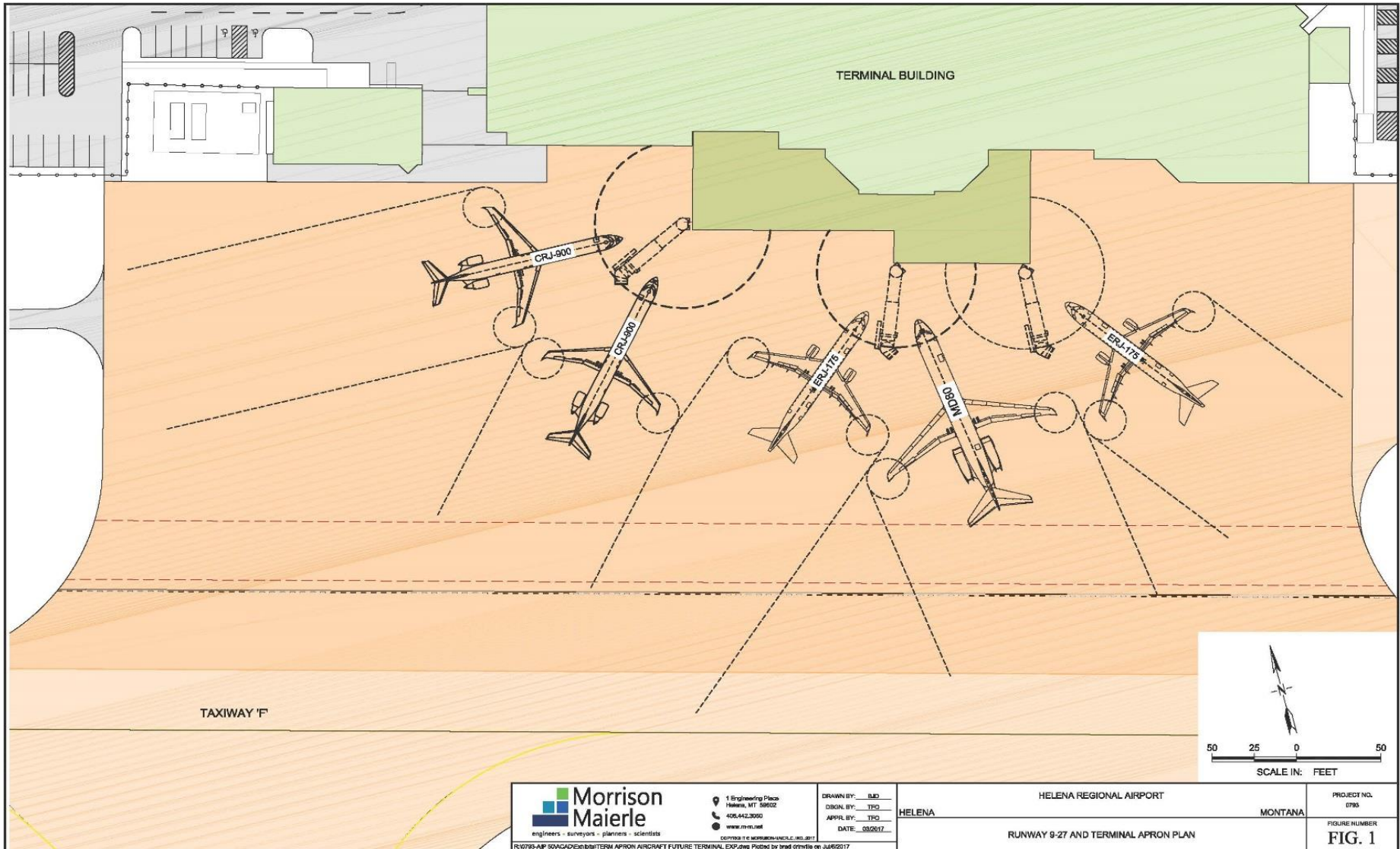
650 POWER STREET
P.O. BOX 1186
HELENA, MT 59624
(406) 442-2340
cwg@cwg-architects.com



**HELENA REGIONAL AIRPORT
PASSENGER TERMINAL EXPANSION**
2850 MERCER LOOP, HELENA, MT. 59602



Aircraft Parking & Jet Bridges



Morrison
Maierte
engineers - surveyors - planners - scientists

1 Engineering Place
Helena, MT 59602
406.442.3050
www.mrma.net

© 2017 MORRISON MAIERTE & ASSOCIATES, INC. ALL RIGHTS RESERVED.

DRAWN BY: BJD
ORGN. BY: TPO
APPR. BY: TPO
DATE: 03/2017

HELENA REGIONAL AIRPORT
HELENA
MONTANA

RUNWAY 9-27 AND TERMINAL APRON PLAN

PROJECT NO.
0795

FIGURE NUMBER
FIG. 1

R:\0795-AP 50ACAD\m\m\TERM APRON AIRCRAFT FUTURE TERMINAL EXP.dwg Plotted by tma on 06/16/2017

Additional Improvements

- ▣ Lav Dump Station – For Aircraft Servicing
- ▣ New LED Ramp Lights
- ▣ Remodeled Main Level Bathrooms
- ▣ New Entrance Door System/Entry Flooring
- ▣ Expanded Food/Beverage Service Inside Security
- ▣ TV/Business Area, Charging Stations, WiFi
- ▣ Historical Aviation and Art Displays

Terminal Project Funding

- ▣ \$10 Million Estimated Project Cost
- ▣ FAA Airport Improvement Program
 - 7.5% of every airline ticket, tax on aviation fuels, air cargo.
- ▣ FAA Passenger Facility Charge Program
 - \$4.50/Passenger
- ▣ Airport Authority Local Matching Funds and Debt Service
- ▣ **NO Local Mil or Bond Levies**

Future Infrastructure Projects

▣ Terminal (2018-2019)	\$10,000,000
▣ Training Center (2019)	\$2,500,000
▣ Apron Rehabs (2020)	\$5,500,000
▣ Runway Rehab (2021)	\$11,500,000
▣ Snow Equipment (2022)	\$1,500,000
▣ Snow Equip. Storage(2023)	\$1,500,000
▣ <u>Aircraft Deice Ramp (2024)</u>	<u>\$4,000,000</u>
▣ TOTAL	\$36,500,000

Northeast Complex



Private Hangar Development



Additional Information

- ▣ Jeff Wadekamper, Airport Director
406-442-2821 or jwadekamper@helenairport.com

- ▣ Check Out The Airport Website or Facebook Page
www.helenairport.com